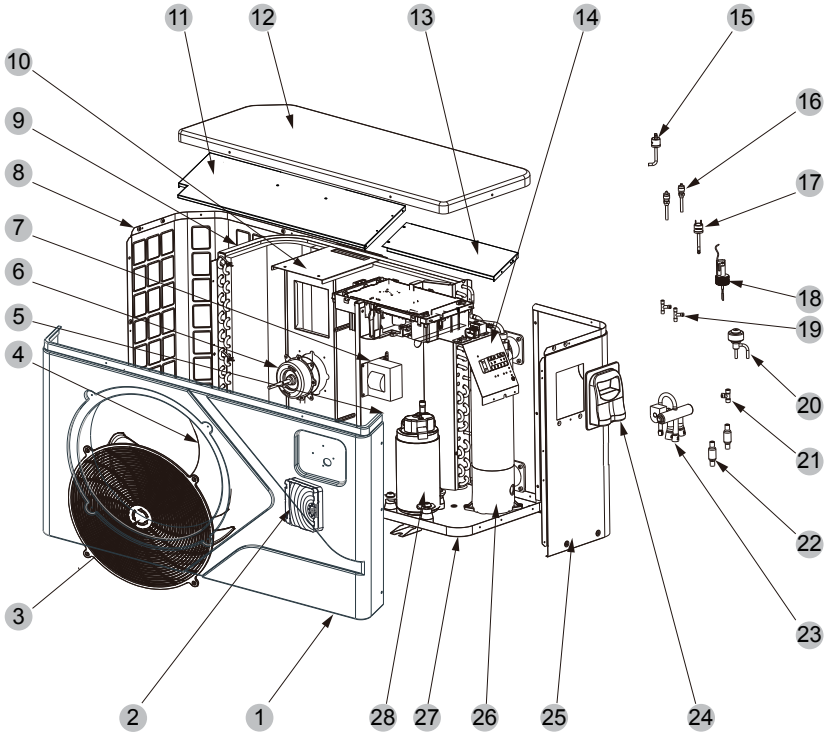


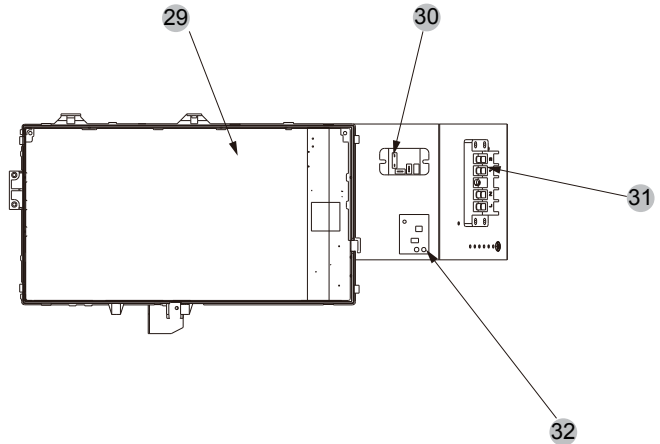
Exploded Diagram

Model and code:(DC 115 10130020)

1 Complete machine structure explosion diagram



2 Electrical control structure explosion diagram



Exploded Diagram

No.	Code	Name	Specifications	Qty
1	80900258	Front frame	ABS	1
2	72200077	CM404	82300028+82400072	1
3	20000-220369	Plastic fan net	ABS	1
4	301030-00000001	Axial fan blades	$\Phi 510 \times 160 - \Phi 12(10) \times 3(SW)$	1
5	80700324	Median septum	Galvanized plate	1
6	20000-330132	Dc motor	ZWS75-A	1
7	82500005	Reactor	R2050FNKZ 20A 50Hz 5.2mH	1
8	80701856	After the network	Galvanized plate	1
9	80600078	Finned heat exchanger	$714 \times 353 \times 800 \times \Phi 7 \times 1.5 \ 2.0$	1
10	80700329	Motor bracket	Galvanized plate	1
11	80700327	Top support plate	Galvanized plate	1
12	80900257	Top	ABS	1
13	80700701	Top support plate 2	Galvanized plate	1
14	80701513	Electrical box support plate	Galvanized plate	1
15	20000-360157	Pressure switch	0.30MPa/0.15MPa ± 0.05 NO	1
16	20000-140150	Needle valve	40mm 1/2"	2
17	2001-3605	Pressure switch	3.2MPa/4.4MPa ± 0.15 NC	1
18	83000012	Water flow switch	PSL-1 3/4	1
19	2000-1460	There-way valve	$\Phi 6.5-2 \times \Phi 6.5(T) \times 0.75$ T2M	2
20	81000013	Electronic expansion valve	DPF(B)2.2C-105	1
21	304030-00000002	There-way valve	$\Phi 9.52-2 \times \Phi 6.35(T) \times 1.0$	2
22	2004-1444	Filter	$\Phi 9.7 - \Phi 9.7 (\Phi 28)$ T2Y2	2
23	2004-1437	Four-way valve	SHF-9H-35U-P/C03C01S	1
24	32009-220029	Junction box body	ABS	1
25	80701855	Right side of the plate	Galvanized plate	1
26	80600075	Titanium tube heat exchanger	$\Phi 12.7 \times 10m \ \Phi 160$	1
27	80701854	Chassis components	Galvanized plate	1
28	80100003	Compressor	WHP10830GUDPC9AQ	1
29	72200015	Frequency conversion board	82300007+82400021	1
30	20000-360297	Relay	HATF903AS30AC220 AC220V 30A	1
31	4000-3901	5 bit wiring block	RS9101C-5(450V~ 4mm ²)(L、N、PE、1、2)	1
32	82600008	Switching power supply	EPS-15-12	1