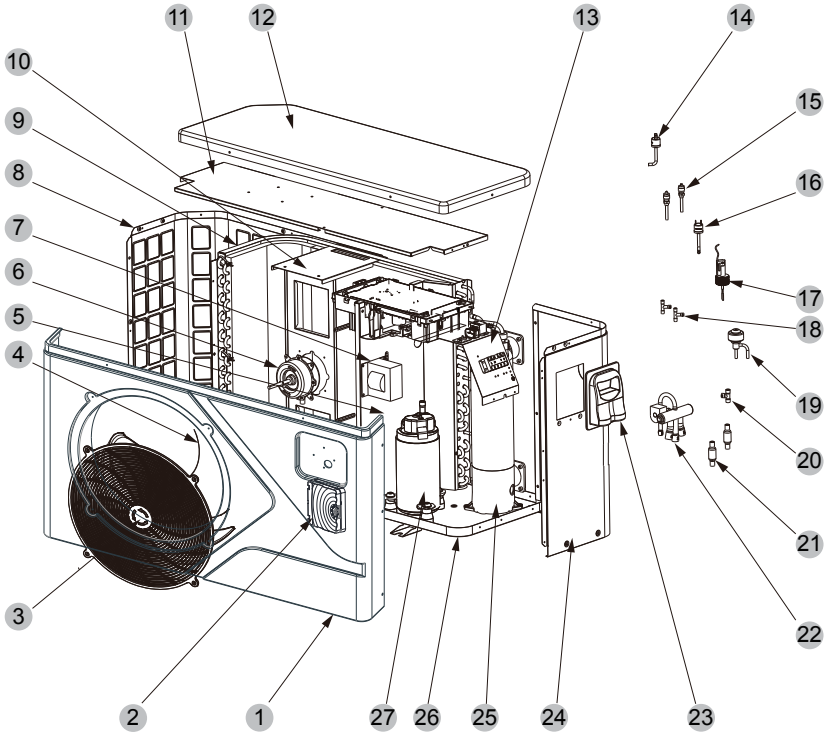


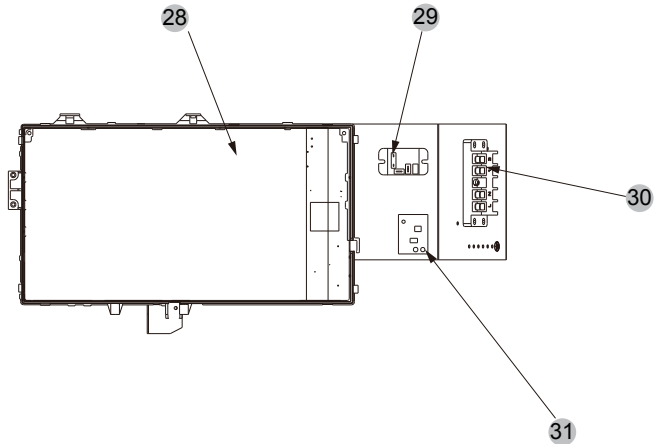
Exploded Diagram

Model and code:(DC 55 10100021)

1 Complete machine structure explosion diagram



2 Electrical control structure explosion diagram



Exploded Diagram

| No. | Code | Name | Specifications | Qty |
|-----|-----------------|-------------------------------|---|-----|
| 1 | 80900253 | Front frame | ABS | 1 |
| 2 | 72200077 | CM404 | 82300028+82400072 | 1 |
| 3 | 20000-220245 | Plastic fan net | Φ461 ABS+30%GF | 1 |
| 4 | 301030-00000006 | Axial fan blades | Φ405×134-Φ8(7)×3 | 1 |
| 5 | 80700215 | Median septum | Galvanized plate | 1 |
| 6 | 80200018 | Dc motor | ZWS40-E51 | 1 |
| 7 | 82500006 | Reactor | R1650FNKZ 16A 50Hz 5mH | 1 |
| 8 | 80700705 | After the network | Galvanized plate | 1 |
| 9 | 80600042 | Finned heat exchanger | 650×245×550×Φ7×2 1.8 | 1 |
| 10 | 80700218 | Motor bracket | Galvanized plate | 1 |
| 11 | 80700217 | Top support plate | Galvanized plate | 1 |
| 12 | 80900254 | Top | ABS | 1 |
| 13 | 80701502 | Electrical box support plate | Galvanized plate | 1 |
| 14 | 20000-360157 | Pressure switch | 0.30MPa/0.15MPa ±0.05 NO | 1 |
| 15 | 20000-140150 | Needle valve | 40mm 1/2" | 2 |
| 16 | 2001-3605 | Pressure switch | 3.2MPa/4.4MPa ±0.15 NC | 1 |
| 17 | 83000012 | Water flow switch | PSL-1 3/4 | 1 |
| 18 | 2000-1460 | There-way valve | Φ6.5-2×Φ6.5(T)×0.75 T2M | 2 |
| 19 | 81000011 | Electronic expansion valve | DPF(B)1.65C-007 | 1 |
| 20 | 304030-00000002 | There-way valve | Φ9.52-2×Φ6.35(T)×1.0 | 1 |
| 21 | 20000-140178 | Filter | Φ9.7-Φ9.7(Φ19) T2M | 2 |
| 22 | 2004-1437 | Four-way valve | SHF-9H-35U-P/C03C01S | 1 |
| 23 | 32009-220029 | Junction box body | ABS | 1 |
| 24 | 80700704 | Right side of the plate | Galvanized plate | 1 |
| 25 | 32012-120061 | Titanium tube heat exchanger | Φ9.52×6m Φ110 | 1 |
| 26 | 80702306 | Chassis | Galvanized plate | 1 |
| 27 | 80100001 | Compressor | WHP04430GRKQA6JT6 | 1 |
| 28 | 72200016 | Variable frequency controller | 82300008+82400021 | 1 |
| 29 | 20000-360297 | Relay | HATF903AS30AC220 AC220V 30A | 1 |
| 30 | 4000-3901 | 5 bit wiring block | RS9101C-5(450V~4mm ²)(L、N、PE、1、2) | 1 |
| 31 | 82600008 | Switching power supply | EPS-15-12 | 1 |