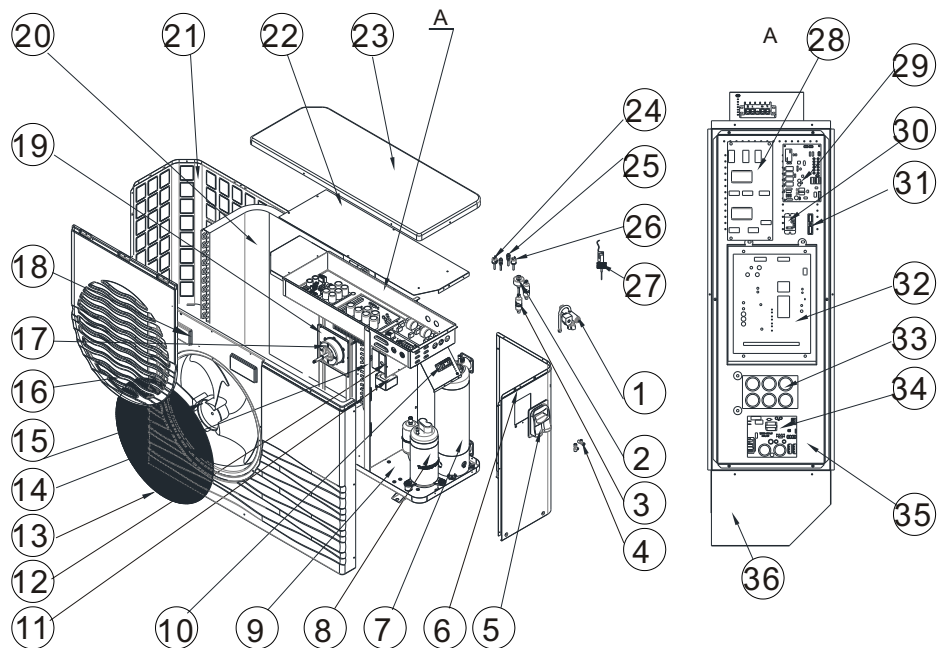


explosive view and parts list

Model and code: WP 120 Tri



No.	Code	Part name	Spec	Note
1	2001-1491	4-way valve	SHF-20A-46	1
2	20000-140450	Electronic expansion valve	DPF(TS1)2.0C-03	1
3	2004-1444	Filter	Φ9.7-Φ9.7 (Φ28) T2Y2	2
4	2000-1460	Triplet	Φ6.5-2×Φ6.5(T)×0.75 T2M	2
5	32009-220029	Junction box body	ABS Black	1
6	80700581	Right side plate	White	1
7	80600098	Titanium tube heat exchanger	Φ16×7.3m+Φ12.7×5.7m	1
8	301010-00000006	Compressor	MVB42FCBMC-L	1
9	80700321	Chassis assembly	White	1
10	20000-390180	Terminal Board(5 bit)	RS9101C-5(450V~4mm2)	1
11	20000-370030	Reactance	R3005RJC-1	1
12	80702226	Anti-explosion box	Black	1
13	32018-210143	Fan protection net	φ17mm	1
14	80700325	Median septum	Black	1
15	20000-270004	Fan blade	Z500-145	1
16	80900281	Fan protection net	ASA 3mm	1
17	20000-330132	Continuous current dynamol	ZWS75-A	1
18	80900274	Front frame	ASA 3mm White	1
19	80700330	Motor support	Black	1
20	80600079	Finned heat exchanger	714×353×800×Φ7×2	1

explosive view and parts list

No.	Code	Part name	Spec	Note
21	80700323	Rear net	White	1
22	301070-20090003	Electric box cover	Black	1
23	80900257	Top cover	ASA 3mm White	1
24	20000-360157	Low tension switch	0.30MPa/0.15MPa ±0.05	1
25	20000-140150	Needle valve	T0305-10	1
26	2001-3605	High tension switch	3.2MPa/4.4MPa ±0.15	1
27	83000012	flow switch	PSL-1	1
28	302010-00000013	filter rejector	1AC58I05WL2	1
29	72200033	PC 1004	20000-430227+302020-00000028	1
30	20000-360297	Relay	HATF903AS30AC220 AC220V 30A	1
31	2000-3909	Terminal Board(2 bit)	RS9211(450V~4mm2)	1
32	302010-00000012	Inverter drive module	2AC58I16WM2	1
33	302010-00000014	Capacitance plate	1AC58I04CP2	1
34	95005-310617	Regulating module	20000-430169+35005-310617	1
35	301070-20090011	Electric box lining board	/	1
36	301070-20090009	Electric box	Black	1